

Human Resources Division
FAQ Notebook
K-12 Classroom Teachers and Certificated Administrators
2021-2022

Click on the page number in **BLUE** to view the report

PAGE

A. FINGERTIP FACTS

- 2021-2022 Fingertip Facts..... [A](#)

B. K-12 TEACHER DEMOGRAPHICS

All K-12 Classroom Teachers

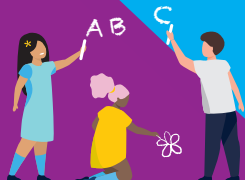
- Employee Subgroup and Job, and Gender and Job..... [B-1](#)
- Employee Subgroup and School Type, and Gender and School Type..... [B-2](#)
- Ethnic Origin and Job..... [B-3](#)
- Local District and Job..... [B-4](#)
- Local District and Ethnic Origin..... [B-5](#)
- Local District Total Minority..... [B-6](#)
- Local District and Employee Subgroup..... [B-7](#)
- Years of Experience by Pay Scale Level..... [B-8](#)
- Local District and Average and Median Age..... [B-9](#)
- Age and Job..... [B-10](#)
- Age and Job (Graph)..... [B-11](#)
- Professional Development: Pay Scale Group and Job..... [B-12](#)
- Distribution of Teachers on the Preparation (T) Salary Table..... [B-13](#)
- Distribution of Teachers on the Preparation (L) Salary Table..... [B-14](#)
- Distribution of Teachers on the Preparation (T/L) Salary Table..... [B-15](#)

C. SCHOOL-BASED ADMINISTRATORS

- Employee Subgroup and Job..... [C-20](#)
- Ethnic Origin and Job, and Gender and Job..... [C-21](#)
- Local District and Job..... [C-22](#)
- Age and Job..... [C-23](#)

D. NON-SCHOOL-BASED ADMINISTRATORS

- Employee Subgroup and Job..... [D-24](#)
- Ethnic Origin and Job, and Gender and Job..... [D-25](#)
- Age and Job..... [D-26](#)
- Age and Gender..... [D-27](#)



Los Angeles Unified

FINGERTIP FACTS 2021-2022

ESTIMATED STUDENT ENROLLMENT

Projected Norm Day Enrollment, including Independent Charter Schools & Affiliated Charters	
TK-3 Enrollment	156,028
4-6 Enrollment	119,111
7-8 Enrollment	78,953
9-12 Enrollment	165,494
Graded Enrollment	519,586
Continuation and Opportunity Schools	3,076
Special Day Program in Special Education Schools	1,783
Special Day Program in All Other Schools	18,235
Other Enrollment	23,094
Total Graded and Other Enrollment	542,680
Early Education Center, Infant Center, California State Preschool, and Expanded Transitional Kindergarten	10,205
Pre-K Special Education	2,441
Adult Education	19,244
Total Graded, Other, Early Ed and Adult Enrollment	574,570

Source: Budget Services and Financial Planning Division. Data as of December 17, 2021.

STUDENT CHARACTERISTICS

English and 97 languages are spoken in Los Angeles Unified schools. Los Angeles Unified has 86,081 students who are learning to speak English proficiently. The primary languages are Spanish (91% of English Learners) and Armenian (1.67%), Russian, Korean, Arabic, Farsi, Vietnamese, K'iche' (a Mayan language of Guatemala), Bengali, Cantonese and other languages each accounting for less than 1% of the total.

Latino	73.4%
White	10.5%
African American	7.5%
Asian	3.9%
American Indian or Alaskan Native, Native Hawaiian or Pacific Islander	Less than 1%
Filipino	2.0%
Not reported	0.6%

Source: Office of Data and Accountability

CONTACT INFORMATION

Los Angeles Unified Families Hotline: (213) 443-1300

Student & Family Wellness Hotline: (213) 241-3840

Parent and Community Services: (213) 481-3350 or online at <https://achieve.lausd.net/pcss>

Health and Wellness Centers:

<https://achieve.lausd.net/wellnesscenters>

SCHOOL FACILITIES

Los Angeles Unified has built 136 new K-12 school projects since 1997. More than 23,100 school rehabilitation, modernization and replacement projects have been completed.

Source: Facilities Services Division

LOS ANGELES UNIFIED BOUNDARIES

Covering an area totaling 710 square miles which includes most of the city of Los Angeles, along with all or portions of 25 cities and unincorporated areas of Los Angeles County. Approximately 4.8 million people live within these boundaries.

CITIES ENTIRELY WITHIN LOS ANGELES UNIFIED

Gardena	San Fernando
Huntington Park	Vernon
Lomita	West Hollywood
Maywood	

CITIES PARTIALLY WITHIN LOS ANGELES UNIFIED

Bell	Culver City	Montebello
Bell Gardens	Hawthorne	Monterey Park
Beverly Hills	Inglewood	Rancho Palos Verdes
Carson	Long Beach	Santa Clarita*
Commerce	Los Angeles	South Gate
Cudahy	Lynwood	Torrance

*Only a few parcels of land generating no enrollment are within Los Angeles Unified.

INSTRUCTIONAL CALENDAR (K-12)

- First Day of Instruction, August 16, 2021
- Winter Recess, December 20, 2021-January 7, 2022
- Spring Recess, April 11, 2022-April 15, 2022
- Last Day of Instruction, June 10, 2022

SCHOOL HOLIDAYS

- Admission Day, September 3, 2021
- Labor Day, September 6, 2021
- Veterans Day, November 11, 2021
- Thanksgiving, November 25-26, 2021
- Dr. Martin Luther King Jr. Day, January 17, 2022
- Presidents Day, February 21, 2022
- Cesar E. Chavez Day Observed, March 28, 2022
- Memorial Day, May 30, 2022



SCHOOLS AND CENTERS

Individual schools vary widely in enrollment size. Elementary schools range from less than 200 to more than 1,100 pupils. Middle schools enroll up to 1,800 students. High schools may have more than 2,500 students.

Primary School Centers	18
Elementary Schools	436
Middle Schools	77
Senior High Schools	86
Option Schools	54
Magnet Schools	68
Multi-level Schools	27
Special Education Schools	12
Home/Hospital	2
K-12 Magnet Centers (on regular campuses)	255
Independent Charter Schools	227
Other Schools and Centers	162
GRAND TOTAL	1,424

Source: Office of Data and Accountability

FINANCIAL INFORMATION

More than 85 percent of the Los Angeles Unified General Fund comes from the state and serves as the primary operating fund for the K-12 program. These dollars pay for expenses such as:

	2020-2021 ¹	2021-2022 ²
Certificated salaries (TEACHERS, LIBRARIANS, COUNSELORS, NURSES, AND ADMINISTRATORS)	\$3.3 billion	\$3.4 billion
Classified salaries (E.G., INSTRUCTIONAL AIDES, OFFICE EMPLOYEES, CUSTODIANS, PLUMBERS, BUS DRIVERS AND THEIR SUPERVISORS)	\$1.1 billion	\$1.1 billion
Employee benefits (RETIREMENT PLANS, EMPLOYEE HEALTH INSURANCE AND WORKERS' COMPENSATION INSURANCE)	\$2.2 billion	\$2.4 billion
Books and supplies (TEXTBOOKS, INSTRUCTIONAL MATERIALS, GENERAL SUPPLIES AND FUEL)	\$418.4 million	\$1.6 billion
Other operating expenses (CONTRACTS, UTILITIES, RENTS AND LEASES, TRAVEL EXPENSE AND INSTRUCTIONAL CONSULTANTS)	\$893.4 million	\$1.1 billion
Capital outlay (COST OF FACILITIES [LAND AND BUILDINGS], BOOKS AND MEDIA FOR LIBRARIES AND EQUIPMENT)	\$81.5 million	\$54.3 million
Other outgoing expenses (PASS THROUGH OF APPORTIONMENTS TO COUNTY-EDUCATED STUDENTS, TRANSFERS OF TAXES TO DIRECT-FUNDED CHARTERS, BOND REDEMPTIONS AND BOND INTEREST)	\$55 million	\$31.5 million
TOTAL EXPENSES GENERAL FUND	\$8.1 billion	\$9.8 billion

¹ 2020-21 Final Budget (Adopted in June)

² 2021-22 Final Budget (Adopted in June)

Source: Budget Services and Financial Planning Division

LOS ANGELES UNIFIED EMPLOYEES

Los Angeles Unified is the second-largest employer in Los Angeles County.

	2021-2022
K-12 Teachers	23,913
Adult Education Teachers	697
Early Education Teachers	568
TOTAL¹	25,178
K-12 Administrators	2,853
Adult Education Administrators	47
Early Education Administrators	87
TOTAL²	2,987
Other Certificated Support Personnel	6,265
Regular Classified Personnel	30,405
Teacher Assistants	2,228
TOTAL EMPLOYEES³	67,063
Substitutes	6,742
TOTAL EMPLOYEES⁴	73,805

Source: Office of Human Resources. Data as of December 15, 2021. Excludes independent charters and unclassified employees. Excludes independent charters and unclassified employees. ¹Includes active classroom teachers and non-classroom teaching positions, including but not limited to instructional coaches, arts education itinerants, and adapted PE. ²Includes active school-based administrators and non-school-based local district and central office administrators. ³Includes active certificated and classified employees, teacher assistants, non-teaching and non-administrative certificated personnel, including, but not limited to nurses, counselors, and psychologists. ⁴Total certificated and classified employees including substitutes and return retirees.

DID YOU KNOW?

Los Angeles Unified is the nation's second-largest school district.

More than 320 magnet programs are available for K-12 students. Themes include Business, Center for Enriched Studies, Communication Arts, Gifted, Liberal Arts (Humanities, Cooperative Learning), Public Service (Fire/EMT, Police, Medical), STEM, and Visual & Performing Arts. (Only Gifted and Highly Gifted students must be identified or verified as High Achieving.)

Dual language programs are offered in: Arabic, Armenian, French, Korean, Mandarin, Japanese and Spanish. Additional world language instruction is also offered in: American Sign Language, Italian, Japanese, Latin and Russian.

Los Angeles Unified maintains 24 Student Health and Human Services Wellness Centers, operated by Los Angeles Unified Student Medical Services, School Mental Health, and SEPA, and 20 Wellness Centers, which are on-campus clinics that provide services to students and families.

There are 44 Communities of Schools (CoS), which are groups of schools centered around a neighborhood working to support students, schools, and families in the community. Each Community of Schools has a Community of School Administrator and a dedicated support team who are innovating new ways to meet local needs to improve the academic achievement of all students, and form strong connections with local partners like neighborhood councils, city councils, local businesses, and community organizations.

LOS ANGELES UNIFIED SCHOOL DISTRICT
Human Resources

TEACHER DEMOGRAPHICS 2021-2022

All K-12 Classroom Teachers by Employee Subgroup and Job ID

Employee Subgroup	Job				Totals	%
	Elementary	Secondary	Special Education	Resource Specialist		
Permanent	9,449	6,375	2,562	1025	19,411	85.1%
Probationary	1039	1153	272	92	2,556	11.2%
Qualifying	5	1	15	15	36	0.2%
Limited	2	4	2	1	9	0.0%
District Intern (T Table)	0	0	8	5	13	0.1%
District Intern (L Table)	71	93	253	84	501	2.2%
University Intern (T Table)	0	2	1	0	3	0.0%
University Intern (L Table)	37	101	68	26	232	1.0%
Temporary	0	10	0	0	10	0.0%
Provisional (T Table)	0	0	1	3	4	0.0%
Provisional (L Table)	4	15	21	7	47	0.2%
Totals	10,607	7,754	3,203	1,258	22,822	100.0%

Regular Credential (All T Table)	96.6%	22,042
District/University Intern (L Table)	3.2%	733
Provisional (L Table)	0.2%	47

Permanent Teachers	97.6%	22,280
Non-Permanent Teachers	2.4%	542

All K-12 Classroom Teachers by Gender and Job ID

Gender	Job				Totals	%
	Elementary	Secondary	Special Education	Resource Specialist		
Female	8,835	4,186	2,519	924	16,464	72.1%
Male	1,770	3,560	684	334	6,348	27.8%
Nonbinary	2	8	0	0	10	0.0%
Totals	10,607	7,754	3,203	1,258	22,822	100.0%

Source: SAP Norm Day (September 17, 2021)

Prepared by the Office of the Chief Human Resources Officer

IC:DA/TEACHER DEMOGRAPHICS/2021-22/ALL 2021-22.xsl: ESG

LOS ANGELES UNIFIED SCHOOL DISTRICT
Human Resources

TEACHER DEMOGRAPHICS 2021-2022
K-12 Teachers by Employee Subgroup, School Type, and Gender

Employee Subgroup	School Type											Totals	%
	Elementary Schools	Middle Schools	Senior High Schools	Special Education Schools	EEC & State Preschool	Primary Centers	Span Schools	Community Day Schools	Continuation Senior High Schools	Opportunity Schools	Other*		
Permanent	9,554	2,986	3,990	183	65	154	1,218	57	181	442	581	19,411	85.1%
Probationary	1,027	554	676	8	11	17	222	2	8	8	23	2,556	11.2%
Qualifying	11	10	11	0	1	1	1	0	1	0	0	36	0.2%
Limited	1	3	0	0	0	0	3	0	0	0	2	9	0.0%
District Intern (T)	7	2	2	0	0	1	1	0	0	0	0	13	0.1%
District Intern (L)	222	106	117	9	4	2	35	0	4	0	2	501	2.2%
University Intern (T)	0	1	1	0	0	0	0	0	0	0	1	3	0.0%
University Intern (L)	61	53	92	4	0	0	17	0	2	1	2	232	1.0%
Temporary	0	6	2	0	0	0	2	0	0	0	0	10	0.0%
Provisional (T)	1	1	1	0	0	0	0	0	0	0	1	4	0.0%
Provisional (L)	15	8	14	6	0	0	4	0	0	0	0	47	0.2%
Totals	10,899	3,730	4,906	210	81	175	1,503	59	196	451	612	22,822	100.0%

Gender	School Type											Totals	%
	Elementary Schools	Middle Schools	Senior High Schools	Special Education Schools	EEC & State Preschool	Primary Centers	Span Schools	Community Day Schools	Continuation Senior High Schools	Opportunity Schools	Other*		
Female	9,210	2,329	2,664	140	72	162	988	29	100	283	487	16,464	72.1%
Male	1,688	1,399	2,235	70	9	13	515	30	96	168	125	6,348	27.8%
Nonbinary	1	2	7	0	0	0	0	0	0	0	0	10	0.0%
Totals	10,899	3,730	4,906	210	81	175	1,503	59	196	451	612	22,822	100.0%

*Adapted Physical Ed Unit-Itinerant; Deaf & Hard of Hearing Unit-Itinerant; HR Cert Contract Pool (C,E,NE, NW, S, W); HR reassigned employees; HR-Districtwide List; Inclusion Facilitator Unit-Itinerant; Inclusion PSA; PE-Teacher-Itinerant; Psychological Services-School Administ; Sp Ed Service Center (C, E, NE, NW, S, W); Sp Ed-Infant/Pre School Prog; SpEd Administration Services-School Adm; SpEd Services Central, Oper-School Admin; SpEd-Multiple School Administration; Speech & Language Unit-Itinerant; Visual Services Unit-Itinerant

Source: SAP Norm Day (September 17, 2021)

Prepared by the Office of the Chief Human Resources Officer

IC:DA/TEACHER DEMOGRAPHICS/2021-22/ALL 2021-22.xsl: LEVEL

LOS ANGELES UNIFIED SCHOOL DISTRICT
Human Resources

TEACHER DEMOGRAPHICS 2021-2022

All K-12 Classroom Teachers by Ethnicity and Job

Ethnic Origin	Job				Totals	%
	Elementary	Secondary	Special Education	Resource Specialist		
American Indian or Alaskan Native	42	47	11	3	103	0.5%
Asian	1,086	822	198	81	2,187	9.6%
Black or African American	714	634	360	178	1,886	8.3%
Filipino	231	306	132	44	713	3.1%
Hispanic/Latino	5,458	3,048	1,510	500	10,516	46.1%
Pacific Islander	20	19	6	1	46	0.2%
White	2,932	2,707	923	415	6,977	30.6%
Two or More	101	133	50	28	312	1.4%
Undeclared	23	38	13	8	82	0.4%
Totals	10,607	7,754	3,203	1,258	22,822	100.0%

Source: SAP Norm Day (September 17, 2021)

Prepared by the Office of the Chief Human Resources Officer

IC:DA/TEACHER DEMOGRAPHICS/2021-22/ALL 2021-22.xsl: ETHN

LOS ANGELES UNIFIED SCHOOL DISTRICT
Human Resources

TEACHER DEMOGRAPHICS 2021-2022

All K-12 Classroom Teachers by Local District and Job

Local District	Job				Totals	%
	Elementary	Secondary	Special Education	Resource Specialist		
Central	1,808	1,313	449	212	3,782	16.6%
East	1,728	1,441	510	222	3,901	17.1%
Northeast	1,522	1,255	438	201	3,416	15.0%
Northwest	1,724	1,183	460	187	3,554	15.6%
South	1,918	1,213	493	185	3,809	16.7%
West	1,688	1,045	404	163	3,300	14.5%
Option Schools	154	207	72	15	448	2.0%
*Other	65	97	377	73	612	2.7%
Grand Total	10,607	7,754	3,203	1,258	22,822	100.0%

*Adapted Physical Ed Unit-Itinerant; Deaf & Hard of Hearing Unit-Itinerant; HR Cert Contract Pool (C,E,NE, NW, S, W); HR reassigned employees; HR-Districtwide List; Inclusion Facilitator Unit-Itinerant; inclusion PSA; PE-Teacher-Itinerant; Psychological Services-School Administ; Sp Ed Service Center (C, E, NE, NW, S, W); Sp Ed-Infant/Pre School Prog; SpEd Administration Services-School Adm; SpEd Services Central, Oper-School Admin; SpEd-Multiple School Administration; Speech & Language Unit-Itinerant; Visual Services Unit-Itinerant

Source: SAP Norm Day (September 17, 2021)

Prepared by the Office of the Chief Human Resources Officer

IC:DA/TEACHER DEMOGRAPHICS/2021-22/ALL 2021-22.xsl: LD

LOS ANGELES UNIFIED SCHOOL DISTRICT
Human Resources

TEACHER DEMOGRAPHICS 2021-2022

All K-12 Classroom Teachers by LD and Ethnic Origin

LD	Ethnicity									Totals
	American Indian or Alaskan Native	Asian	Black or African American	Filipino	Hispanic/Latino	Pacific Islander	White	Two or More	Undeclared	
Central	17	465	246	147	1,992	7	833	65	10	3,782
East	15	314	97	97	2,852	4	471	46	5	3,901
Northeast	18	231	126	99	1,536	3	1,357	35	11	3,416
Northwest	24	343	133	93	1,177	3	1,729	43	9	3,554
South	8	369	527	147	1,701	19	961	64	13	3,809
West	13	362	613	93	914	9	1,213	52	31	3,300
Option Schools	6	42	78	16	141	1	160	3	1	448
*Other	2	61	66	21	203		253	4	2	612
Totals	103	2,187	1,886	713	10,516	46	6,977	312	82	22,822

Gender	Gender									Totals
	American Indian or Alaskan Native	Asian	Black or African American	Filipino	Hispanic/Latino	Pacific Islander	White	Two or More	Undeclared	
Female	72	1,690	1,386	505	7,671	31	4,822	222	65	16,464
Male	31	497	500	208	2,842	15	2,149	89	17	6,348
Nonbinary	0	0	0	0	3	0	6	1	0	10
Totals	103	2,187	1,886	713	10,516	46	6,977	312	82	22,822

*Adapted Physical Ed Unit-Itinerant; Deaf & Hard of Hearing Unit-Itinerant; HR Cert Contract Pool (C,E,NE, NW, S, W); HR reassigned employees; HR-Districtwide List; Inclusion Facilitator Unit-Itinerant; inclusion PSA; PE-Teacher-Itinerant; Psychological Services-School Administ; Sp Ed Service Center (C, E, NE, NW, S, W); Sp Ed-Infant/Pre School Prog; SpEd Administration Services-School Adm; SpEd Services Central, Oper-School Admin; SpEd-Multiple School Administration; Speech & Language Unit-Itinerant; Visual Services Unit-Itinerant

LOS ANGELES UNIFIED SCHOOL DISTRICT
Human Resources

TEACHER DEMOGRAPHICS 2021-2022

All K-12 Classroom Teachers

Total Minority by Local District

	Ethnic Origin																				
LD	American Indian or Alaskan Native	%	Asian	%	Black or African American	%	Filipino	%	Hispanic/Latino	%	Pacific Islander	%	Total Minority	%	White	%	Two or More	%	Undeclared	%	Grand Total
C	17	0.4%	465	12.3%	246	6.5%	147	3.9%	1,992	52.7%	7	0.2%	2,874	76.0%	833	22.0%	65	1.7%	10	0.3%	3,782
E	15	0.4%	314	8.0%	97	2.5%	97	2.5%	2,852	73.1%	4	0.1%	3,379	86.6%	471	12.1%	46	1.2%	5	0.1%	3,901
NE	18	0.5%	231	6.8%	126	3.7%	99	2.9%	1,536	45.0%	3	0.1%	2,013	58.9%	1,357	39.7%	35	1.0%	11	0.3%	3,416
NW	24	0.7%	343	9.7%	133	3.7%	93	2.6%	1,177	33.1%	3	0.1%	1,773	49.9%	1,729	48.6%	43	1.2%	9	0.3%	3,554
S	8	0.2%	369	9.7%	527	13.8%	147	3.9%	1,701	44.7%	19	0.5%	2,771	72.7%	961	25.2%	64	1.7%	13	0.3%	3,809
W	13	0.4%	362	11.0%	613	18.6%	93	2.8%	914	27.7%	9	0.3%	2,004	60.7%	1,213	36.8%	52	1.6%	31	0.9%	3,300
XS	6	0.0%	42	9.4%	78	17.4%	16	3.6%	141	31.5%	1	0.2%	284	62.1%	160	35.7%	3	0.7%	1	0.2%	448
Other*	2	0.3%	61	10.0%	66	10.8%	21	3.4%	203	33.2%	0	0.0%	353	57.7%	253	41.3%	4	0.7%	2	0.3%	612
Totals	103	0.5%	2,187	9.6%	1,886	8.3%	713	3.1%	10,516	46.1%	46	0.2%	15,451	67.7%	6,977	30.6%	312	1.4%	82	0.4%	22,822

*Adapted Physical Ed Unit-Itinerant; Deaf & Hard of Hearing Unit-Itinerant; HR Cert Contract Pool (C,E,NE, NW, S, W); HR reassigned employees; HR-Districtwide List; Inclusion Facilitator Unit-Itinerant; inclusion PSA; PE-Teacher-Itinerant; Psychological Services-School Administ; Sp Ed Service Center (C, E, NE, NW, S, W); Sp Ed-Infant/Pre School Prog; SpEd Administration Services-School Adm; SpEd Services Central, Oper-School Admin; SpEd-Multiple School Administration; Speech & Language Unit-Itinerant; Visual Services Unit-Itinerant

Source: SAP Norm Day (September 17, 2021)

Prepared by the Office of the Chief Human Resources Officer

IC:DA/TEACHER DEMOGRAPHICS/2021-22/ALL 2021-22.xsl: Total Minority

LOS ANGELES UNIFIED SCHOOL DISTRICT
Human Resources

TEACHER DEMOGRAPHICS 2020-2021

All K-12 Classroom Teachers by Local District and Employee Subgroup

	Employee Subgroup											
LD	Permanent	Probationary	Qualifying	Limited	District Intern (T)	District Intern (L)	University Intern (T)	University Intern (L)	Temporary	Provisional (T)	Provisional (L)	Totals
C	3,267	402	19	3	3	92	0	46	4	3	26	3,865
E	3,466	311	7	0	8	83	1	39	0	0	13	3,928
NE	2,993	355	5	3	7	75	0	27	3	2	10	3,480
NW	3,151	335	3	3	6	55	2	25	0	0	10	3,590
S	3,305	403	8	2	6	78	1	54	3	1	21	3,882
W	2,909	411	10	4	11	78	0	26	3	0	12	3,464
XS	98	2	1	0	0	0	0	0	0	0	0	101
Other	926	43	1	1	0	4	1	5	0	1	1	983
Totals	20,115	2,262	54	16	41	465	5	222	13	7	93	23,293

*Adapted Physical Ed Unit-Itinerant; Carlson Hospital; Chavez LA Campus; Deaf & Hard of Hearing Unit-Itinerant; HR Cert Contract Pool (C,E,NE, NW, Sm W); HR-Cert Tmp Asmt Nyr; HR-Districtwide List; Inclusion Facilitator Unit-Itinerant; Inclusion Program School Administration; PE-Teacher-Itinerant; Psychological Services-School Administ; Sp Ed Service Center-Central-Itinerant; Sp Ed-Infant/Pre School Prog; SpEd Administration Services-School Adm; SpEd Services Central, Oper-School Admin; SpEd-Multiple School Administration; Speech & Language Unit-Itinerant; Visual Services Unit-ItinerantPreschool Program, and Adapted Physical Ed.

LOS ANGELES UNIFIED SCHOOL DISTRICT
Human Resources

TEACHER DEMOGRAPHICS 2021-2022

K-12 Classroom Teachers by Job and Years of Experience

Job	Years of Experience by Pay Scale Level										Total
	1	2	3	4	5	6	7	8	9	10+	
Elementary	476	317	233	252	233	244	159	248	170	8,275	10,607
Secondary	532	411	343	290	295	223	159	230	171	5,100	7,754
Special Ed	192	167	230	234	253	216	267	193	161	2,548	4,461
Total	1,200	895	806	776	781	683	585	671	502	15,923	22,822
	(5.3%)	(3.9%)	(3.5%)	(3.4%)	(3.4%)	(3.0%)	(2.6%)	(2.9%)	(2.2%)	(69.8%)	(100%)

Note: Years of Experience are reported up to 10+; Teachers may be in any PSG (20-26) with more than 10 years of experience.
Teachers must be on PSG 27 to move to PSL 11-14 and to Career Increments.

Source: SAP Norm Day (September 17, 2021)

Prepared by the Office of the Chief Human Resources Officer

IC:DA/TEACHER DEMOGRAPHICS/2021-22/ALL 2021-22.xsl: YE 10+

LOS ANGELES UNIFIED SCHOOL DISTRICT
Human Resources

TEACHER DEMOGRAPHICS 2020-2021

All K-12 Classroom Teachers by Age and Local District

	Teacher Age		
Local District	Count	Average Age	Median Age
Central	3,865	45	46
East	3,928	46	46
Northeast	3,480	46	47
Northwest	3,590	47	47
South	3,882	46	46
West	3,464	46	46
Option Schools	101	53	54
*Other	983	49	49
Total	23,293	46	47

*Adapted Physical Ed Unit-Itinerant; Carlson Hospital; Chavez LA Campus; Deaf & Hard of Hearing Unit-Itinerant; HR Cert Contract Pool (C,E,NE, NW, Sm W); HR-Cert Tmp Asmt Nyr; HR-Districtwide List; Inclusion Facilitator Unit-Itinerant; Inclusion Program School Administration; PE-Teacher-Itinerant; Psychological Services-School Administ; Sp Ed Service Center-Central-Itinerant; Sp Ed-Infant/Pre School Prog; SpEd Administration Services-School Adm; SpEd Services Central, Oper-School Admin; SpEd-Multiple School Administration; Speech & Language Unit-Itinerant; Visual Services Unit-Itinerant

LOS ANGELES UNIFIED SCHOOL DISTRICT
Human Resources

TEACHER DEMOGRAPHICS 2021-2022

K-12 Classroom Teachers by Age and Job

Age	Job				Total	Percent
	Elementary	Secondary	Special Education	Resource Specialist		
25 or Less	175	236	25	20	456	2%
26-30	891	987	317	96	2,291	10%
31-35	706	811	432	143	2,092	9%
36-40	867	892	488	144	2,391	10%
41-45	1,696	1,165	502	187	3,550	16%
46-50	2,417	1,234	519	232	4,402	19%
51-55	2,001	1,077	390	169	3,637	16%
56-60	1,220	765	297	134	2,416	11%
61-65	444	382	147	78	1,051	5%
66-70	147	145	63	33	388	2%
Over 70	43	60	23	22	148	1%
Total	10,607	7,754	3,203	1,258	22,822	100%

Source: SAP Norm Day (September 17, 2021)

Prepared by the Office of the Chief Human Resources Officer

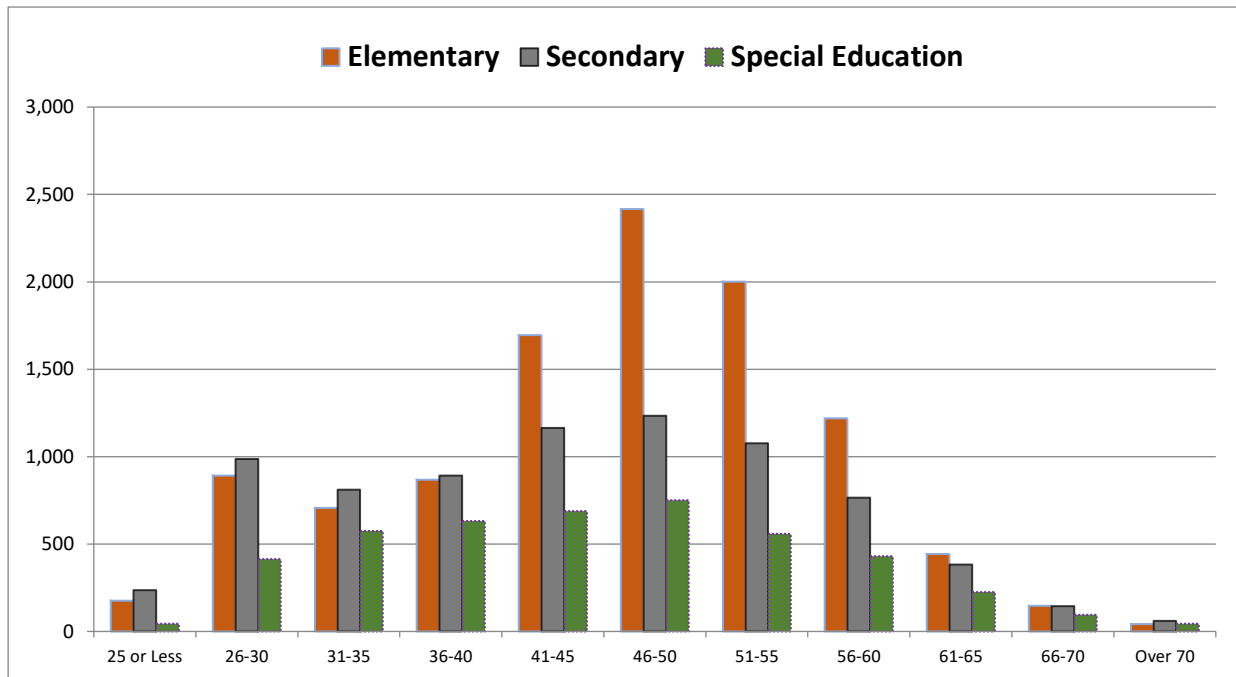
IC:DA/TEACHER DEMOGRAPHICS/2021-22/ALL 2021-22.xsl: Age_Level

LOS ANGELES UNIFIED SCHOOL DISTRICT
Human Resources

TEACHER DEMOGRAPHICS 2021-2022

K-12 Classroom Teachers by Age

Age	School Level			TOTAL	PERCENT
	Elementary	Secondary	Special Education		
25 or Less	175	236	45	456	2%
26-30	891	987	413	2,291	10%
31-35	706	811	575	2,092	9%
36-40	867	892	632	2,391	10%
41-45	1,696	1,165	689	3,550	16%
46-50	2,417	1,234	751	4,402	19%
51-55	2,001	1,077	559	3,637	16%
56-60	1,220	765	431	2,416	11%
61-65	444	382	225	1,051	5%
66-70	147	145	96	388	2%
Over 70	43	60	45	148	1%
TOTAL	10,607	7,754	4,461	22,822	100%
	(48%)	(32%)	(20%)		



Source: SAP Norm Day (September 17, 2021)

Prepared by the Office of the Chief Human Resources Officer

IC:DA/TEACHER DEMOGRAPHICS/2021-22/ALL 2021-22.xsl: Age

LOS ANGELES UNIFIED SCHOOL DISTRICT
Human Resources

TEACHER DEMOGRAPHICS 2021-2022

All K-12 Classroom Teachers by Pay Scale Group and Job

	Job					
Pay Scale Group	Elementary	Secondary	Special Education	Resource Specialist	Total	%
20 (Minimum)	444	507	198	87	1,236	5.4%
21 (+ 14 Points)	154	118	140	42	454	2.0%
22 (+ 28 Points)	563	501	195	71	1,330	5.8%
23 (+ 42 Points)	804	730	256	71	1,861	8.2%
24 (+56 Points)	800	693	324	103	1,920	8.4%
25 (+ 70 Points)	701	669	329	106	1,805	7.9%
26 (+ 84 Points)	680	589	308	116	1,693	7.4%
27 (+ 98 Points)	1,144	1,204	632	207	3,187	14.0%
C1	1,159	1,030	326	193	2,708	11.9%
C2	2,412	1,097	345	176	4,030	17.7%
C3	1,375	459	99	60	1,993	8.7%
C4	371	157	51	26	605	2.7%
Total	10,607	7,754	3,203	1,258	22,822	100%

NORM DAY, SEPTEMBER 2021
TEACHER DEMOGRAPHICS 2021-2022
K-12 Classroom teachers
DISTRIBUTION OF EMPLOYEES ON THE PREPARATION (T) SALARY TABLE*

	PAY SCALE LEVEL														CI	TOTAL	Percent
	1	2	3	4	5	6	7	8	9	10	11	12	13	14			
PS GROUP																	
20	513	121	37	31	18	19	4	9	7	71						830	3.77 %
21	14	33	40	29	28	8	14	21	7	97						291	1.32
22	171	211	130	114	85	66	55	30	27	350						1,239	5.62
23	116	177	156	150	138	137	76	78	53	723						1,804	8.18
24	52	107	133	142	130	115	93	105	66	953						1,896	8.60
25	22	38	85	102	134	103	97	90	60	1,059						1,790	8.12
26	10	17	50	66	90	77	86	99	84	1,104						1,683	7.64
27	13	12	43	64	111	141	154	233	198	346	412	450	489	507		3,173	14.40
C1															2,708	2,708	12.29
C2															4,030	4,030	18.28
C3															1,993	1,993	9.04
C4															605	605	2.74
TOTAL	911	716	674	698	734	666	579	665	502	4,703	412	450	489	507	9,336	22,042	100 %
Percent	4.13%	3.25%	3.06%	3.17%	3.33%	3.02%	2.63%	3.02%	2.28%	21.34%	1.87%	2.04%	2.22%	2.30%	42.36%	100.00%	

1st Career Increment: 2,708 12.29 %
2nd Career Increment: 4,030 18.28
3rd Career Increment: 1,993 9.04
4th Career Increment: 605 2.74
Master's Degree: 9,561 43.38
Doctor's Degree: 311 1.41

TOTAL ANNUAL SALARIES = \$1,822,072,079
With 19.89% mandated benefits = \$2,184,482,216

2021-2022 Average Annual Salary = \$82,664
(Excluding Mandated Benefits)

Average Monthly Rate = \$6,889
Average Hourly Rate = \$67.53595

*Excludes X/Z Basis assignments and Day-to-day Extended Substitutes
Source: SAP Norm Day (September 17, 2021)
Prepared by the Office of the Chief Human Resources Officer
IC:DA/TEACHER DEMOGRAPHICS/2021-22/ALL 2021-22.xsl: 2021-22 CT T Table

**NORM DAY, SEPTEMBER 2021
TEACHER DEMOGRAPHICS 2021-2022**

**K-12 Classroom teachers
DISTRIBUTION OF EMPLOYEES ON THE PREPARATION (L) SALARY TABLE***

	PAY SCALE LEVEL															TOTAL	Percent
	1	2	3	4	5	6	7	8	9	10	11	12	13	14	CI		
PS GROUP																	
20	251	94	30	15	8	2	3	1		2						406	52.05 %
21	10	36	58	31	16	6		1		5						163	20.90
22	19	20	19	16	7	3	1			6						91	11.67
23	3	15	17	9	4	2	1	2		4						57	7.31
24	2	5	2	4	4	3	1	1		2						24	3.08
25		2	4	2	5			1		1						15	1.92
26	3	3		1	1					2						10	1.28
27	1	4	2		2	1				3	1					14	1.79
C1																0	0.00
C2																0	0.00
C3																0	0.00
C4																0	0.00
TOTAL	289	179	132	78	47	17	6	6	0	25	1	0	0	0	0	780	100 %

1 st Career Increment:	0	0.00 %
2 nd Career Increment:	0	0.00
3 rd Career Increment:	0	0.00
4 th Career Increment:	0	0.00
Master's Degree:	87	11.15
Doctor's Degree:	12	1.54

TOTAL ANNUAL SALARIES = \$40,207,625
With 19.89% mandated benefits = \$48,204,922

2021-2022 Average Annual Salary = \$51,548
(Excluding Mandated Benefits)

Average Monthly Rate = \$4,296
Average Hourly Rate = \$42.11438

*Excludes X/Z Basis assignments and Day-to-day Extended Substitutes

Source: SAP Norm Day (September 17, 2021)

Prepared by the Office of the Chief Human Resources Officer

IC:DA/TEACHER DEMOGRAPHICS/2021-22/ALL 2021-22.xsl: 2021-22 CT L Table

DISTRIBUTION OF EMPLOYEES ON THE PREPARATION (T/L) SALARY TABLE*
TEACHER DEMOGRAPHICS 2021-2022

K-12 Classroom teachers

DISTRIBUTION OF EMPLOYEES ON THE PREPARATION (T/L) SALARY TABLE*

	PAY SCALE LEVEL															TOTAL	Percent
	1	2	3	4	5	6	7	8	9	10	11	12	13	14	CI		
PS GROUP																	
20	764	215	67	46	26	21	7	10	7	73	0	0	0	0	0	1,236	5.42 %
21	24	69	98	60	44	14	14	22	7	102	0	0	0	0	0	454	1.99
22	190	231	149	130	92	69	56	30	27	356	0	0	0	0	0	1,330	5.83
23	119	192	173	159	142	139	77	80	53	727	0	0	0	0	0	1,861	8.15
24	54	112	135	146	134	118	94	106	66	955	0	0	0	0	0	1,920	8.41
25	22	40	89	104	139	103	97	91	60	1,060	0	0	0	0	0	1,805	7.91
26	13	20	50	67	91	77	86	99	84	1,106	0	0	0	0	0	1,693	7.42
27	14	16	45	64	113	142	154	233	198	349	413	450	489	507	0	3,187	13.96
C1	0	0	0	0	0	0	0	0	0	0	0	0	0	0	2,708	2,708	11.87
C2	0	0	0	0	0	0	0	0	0	0	0	0	0	0	4,030	4,030	17.66
C3	0	0	0	0	0	0	0	0	0	0	0	0	0	0	1,993	1,993	8.73
C4	0	0	0	0	0	0	0	0	0	0	0	0	0	0	605	605	2.65
TOTAL:	1,200	895	806	776	781	683	585	671	502	4,728	413	450	489	507	9,336	22,822	100 %
Percent:	5.26%	3.92%	3.53%	3.40%	3.42%	2.99%	2.56%	2.94%	2.20%	20.72%	1.81%	1.97%	2.14%	2.22%	40.91%	100%	

1 st Career Increment:	2,708	11.87 %
2 nd Career Increment:	4,030	17.66
3 rd Career Increment:	1,993	8.73
4 th Career Increment:	605	2.65
Master's Degree:	9,648	42.27
Doctor's Degree:	323	1.42

TOTAL ANNUAL SALARIES = \$1,862,279,704
With 19.89% mandated benefits = \$2,232,687,137

2021-2022 Average Annual Salary = **\$81,600**
(Excluding Mandated Benefits)

Average Pay Period Rate = \$6,800
Average Hourly Rate = \$66.66667

*Excludes X/Z Basis assignments and Day-to-day Extended Substitutes

Source: SAP Norm Day (September 17, 2021)

Prepared by the Office of the Chief Human Resources Officer

IC:DA/TEACHER DEMOGRAPHICS/2021-22/ALL 2021-22.xsl: 2021-22 CT TL Table

LOS ANGELES UNIFIED SCHOOL DISTRICT
Human Resources

SCHOOL-BASED ADMINISTRATOR DEMOGRAPHICS 2021-2022

All School-Based Administrators by Employee Subgroup and Job

	Job			
Employee Subgroup	Principal	Assistant Principal	Totals	%
Permanent	655	706	1,361	69.6%
Qualifying	114	195	309	15.8%
Limited	16	0	16	0.8%
Provisional	72	190	262	13.4%
Restricted	7	0	7	0.4%
Totals	864	1,091	1,955	100.0%

Excludes return retirees, inactive on a personal leave and detached services employees.

Source: SAP Norm Day (September 17, 2021)

Prepared by the Office of the Chief Human Resources Officer

IC:DA/TEACHER DEMOGRAPHICS/2021-22/ALL 2021-22.xsl: esg sba

LOS ANGELES UNIFIED SCHOOL DISTRICT
Human Resources

SCHOOL-BASED ADMINISTRATOR DEMOGRAPHICS 2021-2022
School-Based Administrators by Ethnic Origin, Gender, and Job

	Job			
Ethnic Origin	Principal	Assistant Principal	Totals	%
American Indian or Alaskan Native	0	4	4	0.2%
Asian	67	82	149	7.6%
Black or African American	186	233	419	21.4%
Filipino	12	28	40	2.0%
Hispanic/Latino	390	514	904	46.2%
Pacific Islander	1	5	6	0.3%
White	208	223	431	22.0%
Two or More	0	2	2	0.1%
Totals	864	1,091	1,955	100.0%

	Job			
Gender	Principal	Assistant Principal	Totals	%
Female	567	742	1,309	67.0%
Male	297	349	646	33.0%
Totals	864	1,091	1,955	100.0%

Source: SAP Norm Day (September 17, 2021)

Prepared by the Office of the Chief Human Resources Officer

IC:DA/TEACHER DEMOGRAPHICS/2021-22/ALL 2021-22.xsl: Ethnicity & Gender

LOS ANGELES UNIFIED SCHOOL DISTRICT
Human Resources

SCHOOL-BASED ADMINISTRATOR DEMOGRAPHICS 2021-2022
School-Based Administrators by Local District and Job

Local District	Job		Totals	%
	Principal	Assistant Principal		
C	158	140	298	15.2%
E	145	134	279	14.3%
NE	118	104	222	11.4%
NW	120	87	207	10.6%
S	143	136	279	14.3%
W	148	91	239	12.2%
Option Schools	3	7	10	0.5%
Adult	10	36	46	2.4%
Other*	19	356	375	19.2%
Totals	864	1,091	1,955	100.0%

* Sp Ed Service Center Itinerants (C,E,NE,NW,S,W); HR-Pool-Administrative Assignments, and Reassigned Administrators.

Source: SAP Norm Day (September 17, 2021)

Prepared by the Office of the Chief Human Resources Officer

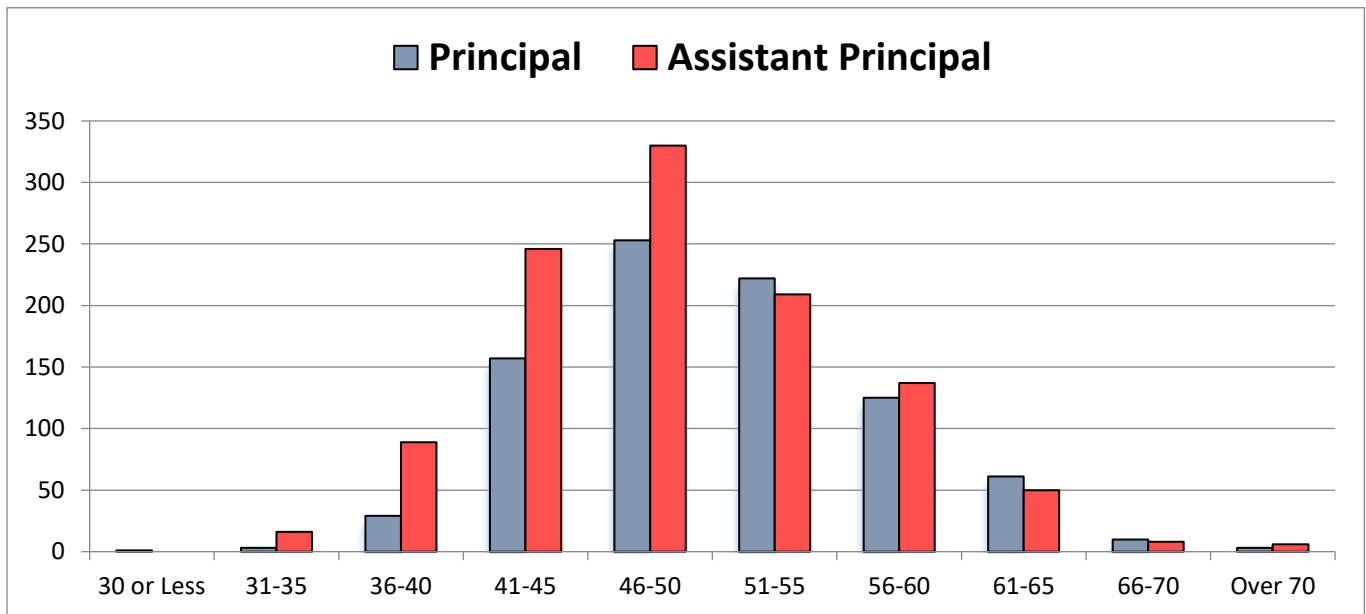
IC:DA/TEACHER DEMOGRAPHICS/2021-22/ALL 2021-22.xsl: LD SBA

LOS ANGELES UNIFIED SCHOOL DISTRICT
Human Resources

SCHOOL-BASED ADMINISTRATOR DEMOGRAPHICS 2021-2022

School-Based Administrators by Age and Position

Age	Position		Total	%
	Principal	Assistant Principal		
30 or Less	1	0	1	0.1%
31-35	3	16	19	1.0%
36-40	29	89	118	6.0%
41-45	157	246	403	20.6%
46-50	253	330	583	29.8%
51-55	222	209	431	22.0%
56-60	125	137	262	13.4%
61-65	61	50	111	5.7%
66-70	10	8	18	0.9%
Over 70	3	6	9	0.5%
Total	864	1,091	1,955	100.0%



Source: SAP Norm Day (September 17, 2021)

Prepared by the Office of the Chief Human Resources Officer

IC:DA/TEACHER DEMOGRAPHICS/2021-22/ALL 2021-22.xsl: Age Summary

**LOS ANGELES UNIFIED SCHOOL DISTRICT
Human Resources**

NON-SCHOOL-BASED ADMINISTRATOR DEMOGRAPHICS 2021-2022

Employee Subgroup	Employee Subgroup and Job							Totals	%
	Superintendent, Assistant Superintendent, Instructional Area Superintendents	Executive Directors, Chiefs, Assistant General Counsel Attorneys	Coordinators	Specialists	Directors and Administrators	School Support Administrators	Temporary Advisers		
Permanent	0	1	16	12	6	1	0	36	4.0%
Limited	7	22	0	0	0	793	19	841	93.7%
Temporary	1	2	0	0	0	10	0	13	1.4%
Provisional	0	0	3	5	0	0	0	8	0.9%
Totals	8	25	19	17	6	804	19	898	100.0%

Includes NSB Administrators on the G Table and excludes Detached employees

Source: SAP Norm Day (September 17, 2021)

Prepared by the Office of the Chief Human Resources Officer

IC:DA/TEACHER DEMOGRAPHICS/2021-22/ALL 2021-22.xsl: NSB ESG

LOS ANGELES UNIFIED SCHOOL DISTRICT
Human Resources

NON-SCHOOL-BASED ADMINISTRATOR DEMOGRAPHICS 2021-2022

Ethnic Origin and Job									
Ethnicity	Superintendent, Assistant Superintendent, Instructional Area Superintendents	Executive Directors, Chiefs, Assistant General Counsel Attorneys	Coordinators	Specialists	Directors and Administators	School Support Administrators	Temporary Advisers	Totals	%
American Indian	0	0	0	0	0	1	0	1	0.1%
Asian	1	4	1	3	1	65	1	76	8.5%
Black or African American	1	4	5	1	1	135	4	151	16.8%
Filipino	1	1	1	0	0	21	0	24	2.7%
Hispanic/Latino	5	11	11	7	2	365	9	410	45.7%
Pacific Islander	0	0	0	0	0	2	0	2	0.2%
White	0	5	1	6	2	214	4	232	25.8%
Two or More	0	0	0	0	0	1	1	2	0.2%
Totals	8	25	19	17	6	804	19	898	100.0%

By Gender and Job									
Gender	Superintendent, Assistant Superintendent, Instructional Area Superintendents	Executive Directors, Chiefs, Assistant General Counsel Attorneys	Coordinators	Specialists	Directors and Administators	School Support Administrators	Temporary Advisers	Totals	%
Female	3	13	13	16	3	584	12	644	71.7%
Male	5	12	6	1	3	220	7	254	28.3%
Totals	8	25	19	17	6	804	19	898	100.0%

Includes NSB Administrators on the G Table and excludes Detached employees

Source: SAP Norm Day (September 17, 2021)

Prepared by the Office of the Chief Human Resources Officer

IC:DA/TEACHER DEMOGRAPHICS/2021-22/ALL 2021-22.xsl: NSB Ethnicity & Gender

LOS ANGELES UNIFIED SCHOOL DISTRICT
Human Resources

NON-SCHOOL-BASED ADMINISTRATOR DEMOGRAPHICS 2021-2022

Age	Age and Job							Totals	%
	Superintendent, Assistant Superintendent, Instructional Area Superintendents	Executive Directors, Chiefs, Assistant General Counsel Attorneys	Coordinators	Specialists	Directors and Administrators	School Support Administrators	Temporary Advisers		
35 or Less	0	0	0	0	0	12	0	12	1.3%
36-40	0	0	0	1	0	65	1	67	7.5%
41-45	1	3	2	5	0	149	5	165	18.4%
46-50	3	8	8	6	2	232	2	261	29.1%
51-55	0	8	5	4	3	175	7	202	22.5%
56-60	2	3	2	0	1	121	3	132	14.7%
61-65	2	2	1	1	0	38	1	45	5.0%
66-70	0	0	0	0	0	8	0	8	0.9%
Over 71	0	1	1	0	0	4	0	6	0.7%
Totals	8	25	19	17	6	804	19	898	100.0%

Includes NSB Administrators on the G Table and excludes Detached employees

Source: SAP Norm Day (September 17, 2021)

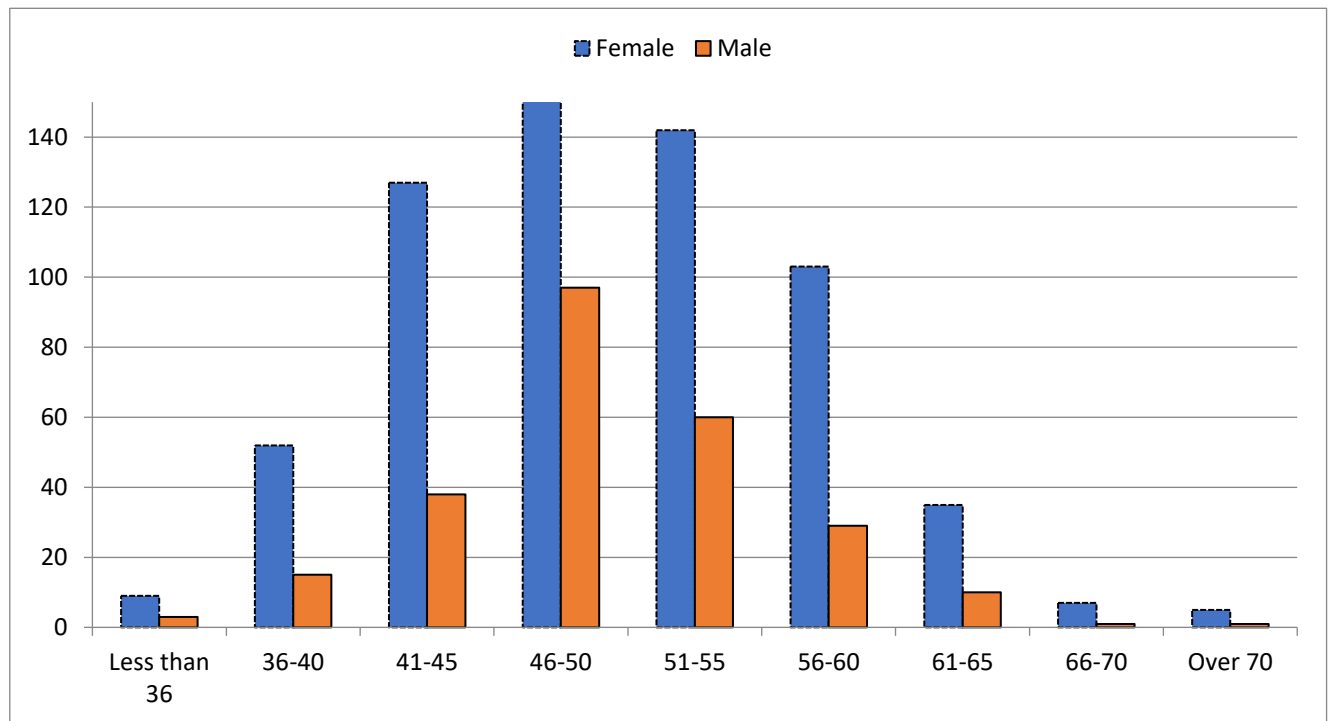
Prepared by the Office of the Chief Human Resources Officer

IC:DA/TEACHER DEMOGRAPHICS/2021-22/ALL 2021-22.xsl: NSB Age & Job

LOS ANGELES UNIFIED SCHOOL DISTRICT
Human Resources

NON-SCHOOL-BASED ADMINISTRATOR DEMOGRAPHICS 2020-2021

Age	Age and Gender		Total	%
	Female	Male		
Less than 36	9	3	12	1%
36-40	52	15	67	7%
41-45	127	38	165	18%
46-50	164	97	261	29%
51-55	142	60	202	22%
56-60	103	29	132	15%
61-65	35	10	45	5%
66-70	7	1	8	1%
Over 70	5	1	6	1%
Total	644	254	898	100.0%



Includes NSB Administrators on the G Table and excludes Detached employees

Source: SAP Norm Day (September 17, 2021)

Prepared by the Office of the Chief Human Resources Officer

IC:DA/TEACHER DEMOGRAPHICS/2021-22/ALL 2021-22.xsl: NSB Age & Gender